

Incubus and Succubus Magic: Jennifer Love's Guide to the Supernatural

In the realm of the supernatural, few figures evoke as much fascination and intrigue as the enigmatic incubus and succubus. These legendary beings have captured the human imagination for centuries, their allure stemming from their reputed ability to visit mortals in their dreams, engaging in intimate encounters that leave an enduring mark on the psyche.

In recent years, renowned author Jennifer Love has emerged as a leading authority on incubus and succubus magic. Through her groundbreaking research and personal experiences, she has shed light on the origins, practices, and transformative power attributed to these captivating supernatural beings.



Incubus and Succubus Magic by Jennifer Love

★★★★☆ 4.6 out of 5

Language : English

File size : 2040 KB

Text-to-Speech : Enabled

Screen Reader : Supported

Enhanced typesetting : Enabled

Word Wise : Enabled

Print length : 61 pages

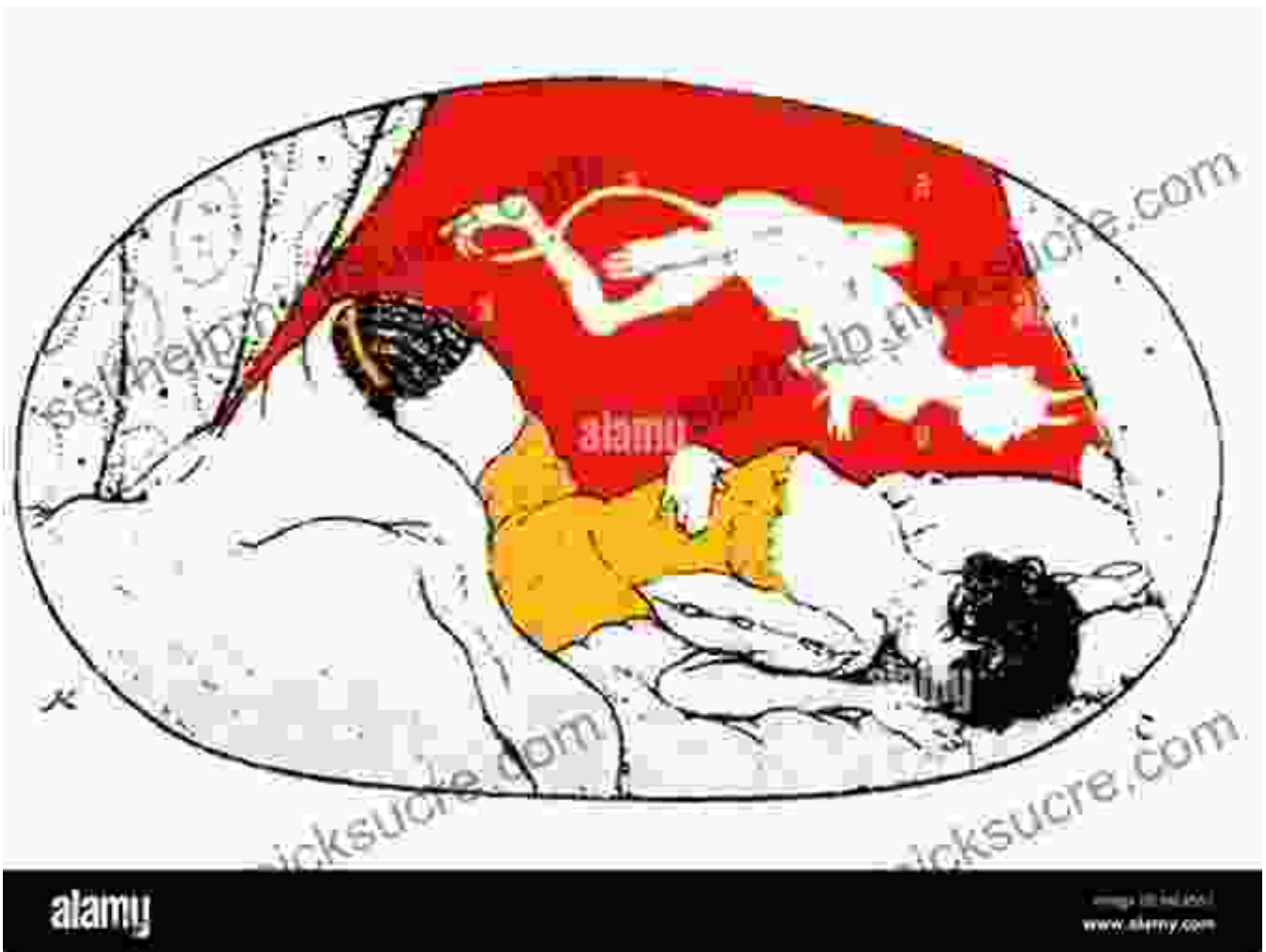
Lending : Enabled

FREE

DOWNLOAD E-BOOK



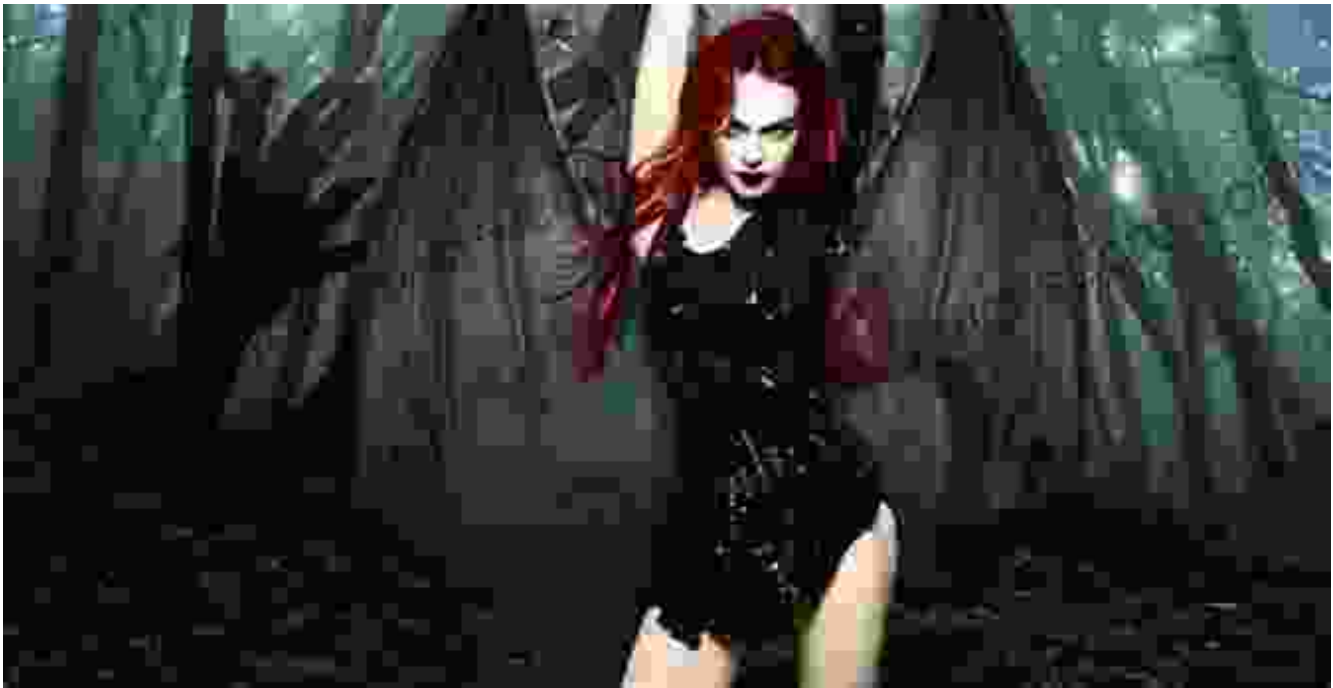
Origins and Nature of Incubus and Succubus Beings



The concept of incubi (male) and succubi (female) has deep roots in mythology and folklore across cultures. In ancient Mesopotamia, the demoness Lilith was believed to be a succubus who seduced men in their sleep. Greek mythology featured the incubus Pan, a half-goat, half-man hybrid who was known for his amorous pursuits.

Traditionally, incubi and succubi have been portrayed as both malevolent and benevolent entities. Some accounts describe them as demonic beings who drain their victims of vital energy or corrupt their souls. Others depict them as guardians and guides who offer sexual pleasure and spiritual knowledge in exchange for devotion.

Practices and Techniques of Incubus and Succubus Magic



Succubus depicted as an alluring and tempting entity.

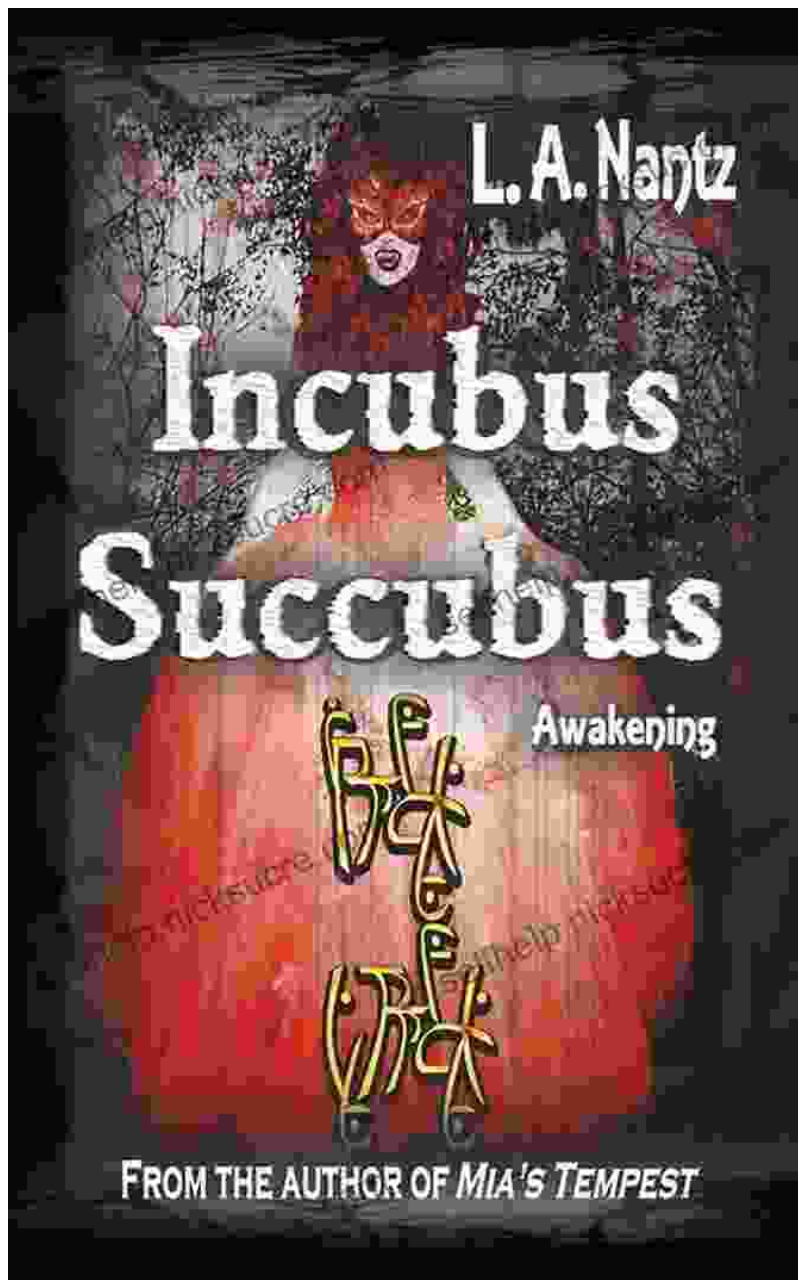
Jennifer Love's approach to incubus and succubus magic emphasizes the transformative potential of these beings. She believes that by opening oneself to their presence, one can access profound insights about oneself, heal emotional wounds, and unlock latent spiritual abilities.

Among the practices she explores are:

- **Astral Projection:** Establishing a connection with an incubus or succubus in the astral realm through controlled dreaming.
- **Sexual Energy:** Acknowledging and embracing the sexual energy associated with these beings as a means of personal empowerment.

- **Ritual Invocation:** Summoning an incubus or succubus for specific assistance or guidance.
- **Dream Interpretation:** Paying close attention to the messages and symbols conveyed during encounters with these beings.

Jennifer Love's Transformative Encounters



Jennifer Love's own encounters with incubi and succubi have shaped her understanding of their role in personal evolution. She recounts a profound experience with an incubus who appeared in her dreams and guided her through a period of intense healing and transformation.

Her experiences have inspired her to create workshops and retreats where others can connect with these supernatural beings in a safe and supportive environment. She emphasizes the importance of respecting the boundaries of these entities and approaching them with both reverence and discernment.

Controversy and Misconceptions

The topic of incubus and succubus magic often sparks controversy and raises concerns among skeptics. Some dismiss these beings as figments of the imagination or products of sleep paralysis. Others question the ethical implications of interacting with such potentially dangerous entities.

Jennifer Love acknowledges the skepticism and concerns surrounding her work but emphasizes the need for an open-minded exploration of these phenomena. She encourages those interested in incubus and succubus magic to approach it with caution, seeking guidance from experienced practitioners and respecting the boundaries of their own comfort levels.

: Unveiling the Enigma

Incubus and succubus magic remains a fascinating and enigmatic subject, evoking both wonder and apprehension. Through her research and personal experiences, Jennifer Love has shed light on the profound transformative potential attributed to these supernatural beings.

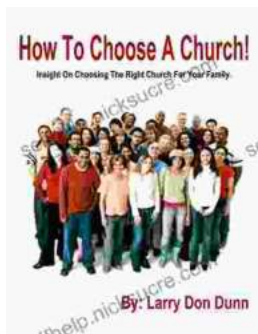
Whether you are a seasoned practitioner of the occult or simply curious about this intriguing aspect of the supernatural, Jennifer Love's work offers a unique perspective on the nature and power of incubus and succubus magic. By unveiling the enigma surrounding these beings, she invites us to explore the depths of our own consciousness and embrace the possibility of profound personal evolution.



Incubus and Succubus Magic by Jennifer Love

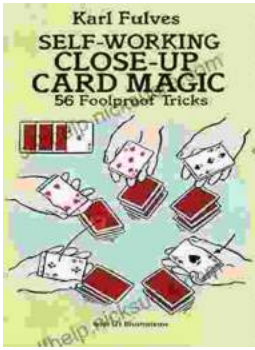
★★★★☆ 4.6 out of 5

Language : English
File size : 2040 KB
Text-to-Speech : Enabled
Screen Reader : Supported
Enhanced typesetting : Enabled
Word Wise : Enabled
Print length : 61 pages
Lending : Enabled



How to Choose a Church That's Right for You

Choosing a church can be a daunting task, but it's important to find one that's a good fit for you. Here are a few things to consider when making...



The Unbelievable World of Self-Working Close Up Card Magic: A Comprehensive Guide

Imagine having the power to perform mind-boggling card tricks that leave your audience in awe, without years of practice or complicated...